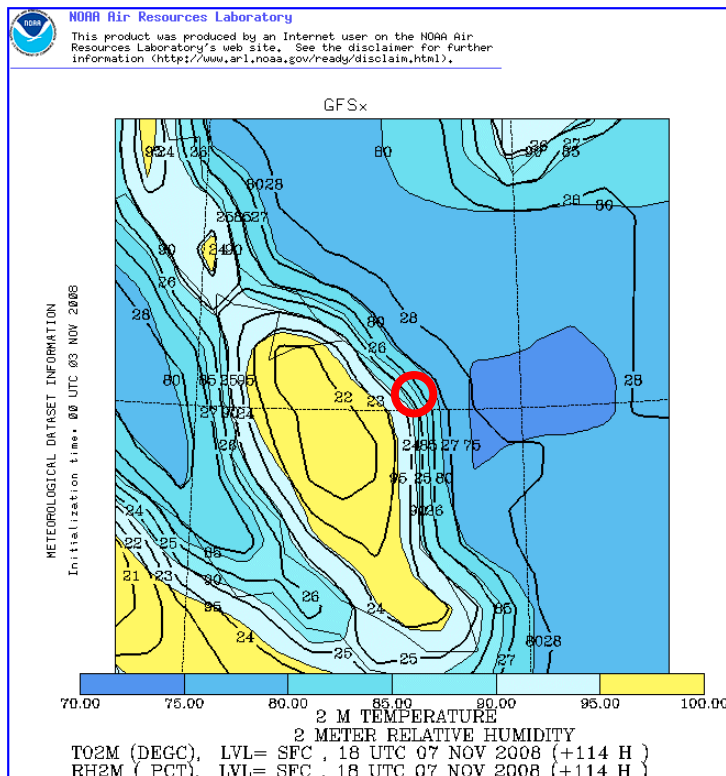
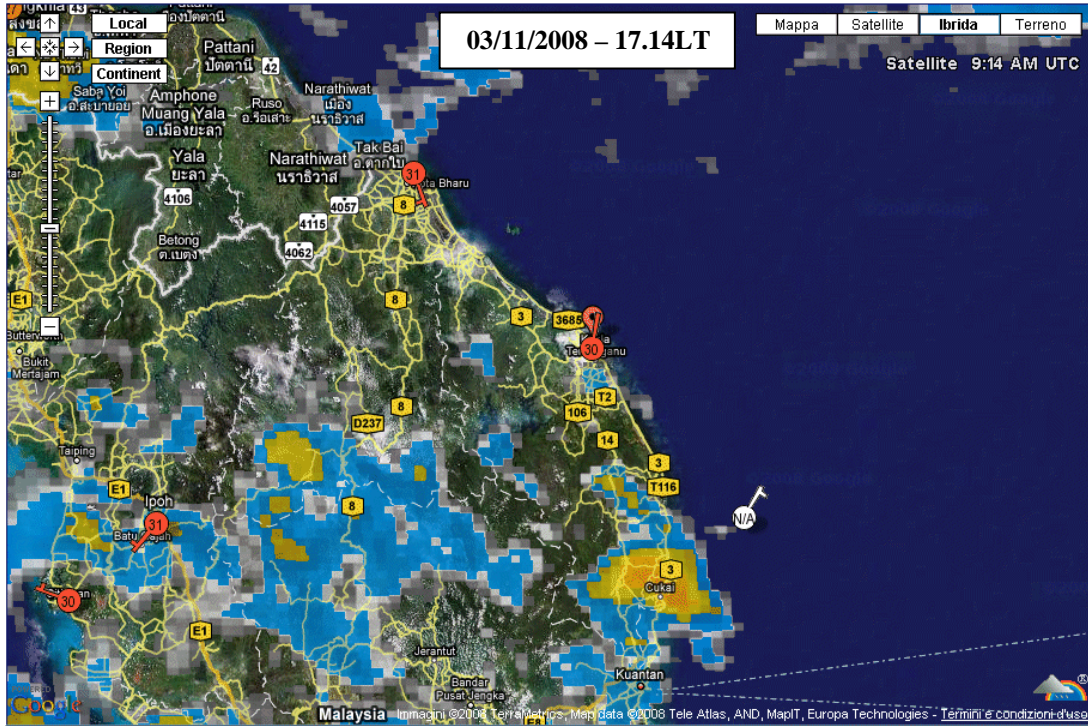


**FORECAST FOR THE 07-08/11/2008
ISSUE THE 03/11/2008 AT 18.00LT
RACING OUTDOOR - TERENGGANU**

Satellite image & Synoptical maps



Prognosis and synoptical forecast

Re-analysis of the last forecast: /

Summary: Rain. Light breeze, 2.4 m/s from north-northeast. 3 mm precipitation per 24 hours. Ta2m=24-31°C, increasing until 16.00LT then decreasing. WBGT=28-35°C, increasing until 16.00LT then decreasing. Ur=70-95%, increasing.

Lightning Threat: Low-Med (None; Low; Med; High)

UV Index: 3-5 (durante il giorno), 0-1 (di notte)

Weather for 07/11/2008:

<i>HH [LT]</i>	<i>CLOUD COVERAGE [%]</i>	<i>RAIN CLASSES [mm/h]</i>	<i>RAIN RISK [%]</i>	<i>Tair2m [°C]</i>	<i>WBGT [°C]</i>	<i>Rel. Hum. [%]</i>	<i>Wdir</i>	<i>Wspeed [m/s]</i>	<i>Level confidence</i>
1500	25-35	0-1	30-40	29-30	32-34	70-75	NE	1-2	7
1600	30-40	1	40-50	30-31	33-35	70-75	NE	1-2	7
1700	40-50	1	60-70	28-29	31-33	75-80	NW- NE	0-1	7
1800	40-50	1	60-70	27-28	30-32	80-85	var.	0-1	7
1900	40-50	1	60-70	26-27	30-32	85-90	var.	0-1	7
2000	40-50	1-2	70-75	25-26	29-31	85-90	var.	0-1	7
2100	40-50	1	50-60	24-25	28-29	85-90	SW- NW	0-1	7
2200	40-50	0-1	40-50	24-25	28-29	85-90	S-SW	1-2	7
2300	40-50	0-1	40-50	24-25	28-30	90-95	S-SW	1-2	7

Rain classes:

- 0: 0mm/h
- 1: 0-0.5mm/h
- 2: 0.5-2mm/h
- 3: 2-4mm/h
- 4: 4-6mm/h
- 5: >6mm/h

Level of Confidence

- 0: Lower Confidence
- 10: Higher Confidence

Summary: Rain. Light air, 1,2 m/s from east. 3 mm precipitation per 24 hours. Ta2m=23-26°C, decreasing in the rain and in the thunderstorms. WBGT=26-31°C, decreasing in the rain and in the thunderstorms. Ur=85-100%, increasing in the raining clouds and in the thunderstorms.

Lightning Threat: Low-Med (None; Low; Med; High)

UV Index: 0-1

Weather for 08/11/2008:

<i>HH [LT]</i>	<i>CLOUD COVERAGE [%]</i>	<i>RAIN CLASSES [mm/h]</i>	<i>RAIN RISK [%]</i>	<i>Tair2m [°C]</i>	<i>WBGT [°C]</i>	<i>Rel. Hum. [%]</i>	<i>Wdir</i>	<i>Wspeed [m/s]</i>	<i>Level confidence</i>
0000	50-60	0-1	30-40	24-25	28-30	90-95	S	1-2	6
0100	50-60	0-1	30-40	24-25	28-30	90-95	S	1-2	6
0200	50-60	0-1	30-40	24-25	28-30	90-95	S	1-2	6
0300	60-70	1-2	60-70	23-24	26-28	95-100	SSE-S	0-1	6
0400	60-70	1-2	60-70	23-24	26-28	95-100	SSE	0-1	6
0500	50-60	0-1	30-40	24-25	28-30	90-95	SSE	0-1	6
0600	50-60	0-1	30-40	24-25	28-30	90-95	SSE	0-1	6
0700	50-60	0-1	30-40	24-25	28-30	90-95	SSE	0-1	6
0800	50-60	0-1	40-50	25-26	29-31	85-90	SSE	0-1	6
0900	50-60	0-1	40-50	25-26	29-31	85-90	SSE	0-1	6

Rain classes:

- 0: 0mm/h
- 1: 0-0.5mm/h
- 2: 0.5-2mm/h
- 3: 2-4mm/h
- 4: 4-6mm/h
- 5: >6mm/h

Level of Confidence

- 0: Lower Confidence
- 10: Higher Confidence